



Ckingway

# SPECIFICATION

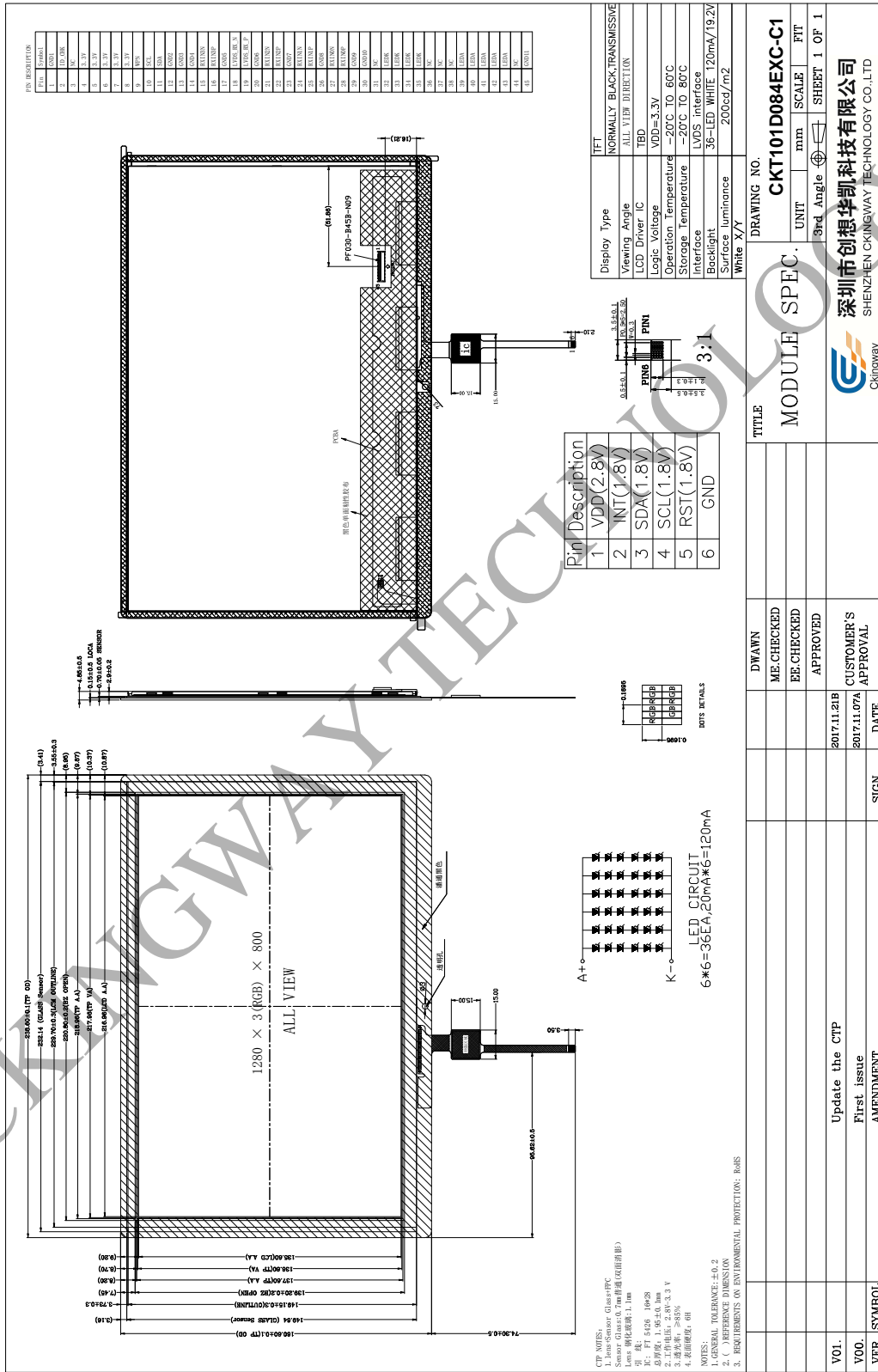
LCD Number: CKT101D084EXC-C1

CUSTOMER APPROVED	PREPARE BY	CHECK BY	APPROVED BY
SUPPLIER APPROVED	PREPARE BY	CHECK BY	APPROVED BY

# 1. General Specification

Item	Contents	Unit
LCD TYPE	TFT/TRANSMISSIVE	
MODULE SIZE (W*H*T)	238.6*160.6*4.85	MM
ACTIVE SIZE (W*H)	216.96*135.6	MM
PIXEL PITCH (W*H)	0.1695*0.1695	MM
NUMBER OF DOTS	1280*800	
LCM DRIVER IC	HX8245-E+HX8695-B	
CTP DRIVER IC	FT 5426	
INTERFACE TYPE	LVDS	
TOP POLARIZER TYPE	ANTI-GLARE	
RECOMMEND VIEWING DIRECTION	ALL	O'CLOCK
GRAY SCALE INVERSION DIRECTION	--	O'CLOCK
BACKLIGHT TYPE	36-CHIP WHITE LED	
TOUCH PANEL TYPE	CAPACITIVE	

# 2. Mechanical Drawing



### 3. Interface Pin Function

Pin No.	Symbol	Description
1	GND1	GROUND
2	ID-CHK	Product ID signal output (1.8V)
3	NC	NO CONNECT
4	3.3V	Logic power 3.3V
5	3.3V	Logic power 3.3V
6	3.3V	Logic power 3.3V
7	3.3V	Logic power 3.3V
8	3.3V	Logic power 3.3V
9	WPN	NO CONNECT
10	SCL	NO CONNECT
11	SDA	NO CONNECT
12	GND2	GROUND
13	GND3	GROUND
14	GND4	GROUND
15	RXIN3N	-LVDS differential data input
16	RXIN3P	+ LVDS differential data input
17	GND5	GROUND
18	LVDS-RX-N	-LVDS differential data input
19	LVDS-RX-P	+ LVDS differential data input
20	GND6	GROUND
21	RXIN2N	-LVDS differential data input
22	RXIN2P	+ LVDS differential data input
23	GND7	GROUND
24	RXININ	-LVDS differential data input
25	RXINIP	+ LVDS differential data input
26	GND8	GROUND
27	RXJN0N	-LVDS differential data input
28	RXIN0P	+ LVDS differential data input
29	GDN9	GROUND
30	GND10	GROUND
31	NC	NO CONNECT
32	LEDK	LED CATHODE
33	LEDK	LED CATHODE
34	LEDK	LED CATHODE
35	LEDK	LED CATHODE
36	NC	NO CONNECT
37	NC	NO CONNECT
38	NC	NO CONNECT
39	LEDA	LED ANODE
40	LEDA	LED ANODE

41	LEDA	LED ANODE
42	LEDA	LED ANODE
43	LEDA	LED ANODE
44	NC	NO CONNECT
45	GND11	GROUND

#### CTP PIN ASSIGNMENY

PIN NO.	SYMBOL	FUNCTION DESCRIPTIONS
1	VDD	power supply for analong voltage
2	INT	Interrupt signal(2.8~3.3V)
3	SDA	I2C data input and output
4	SCL	I2C clock inp(2.8~3.3V)
5	RST	Reset signal
6	GND	Ground