



Ckingway

SPECIFICATION

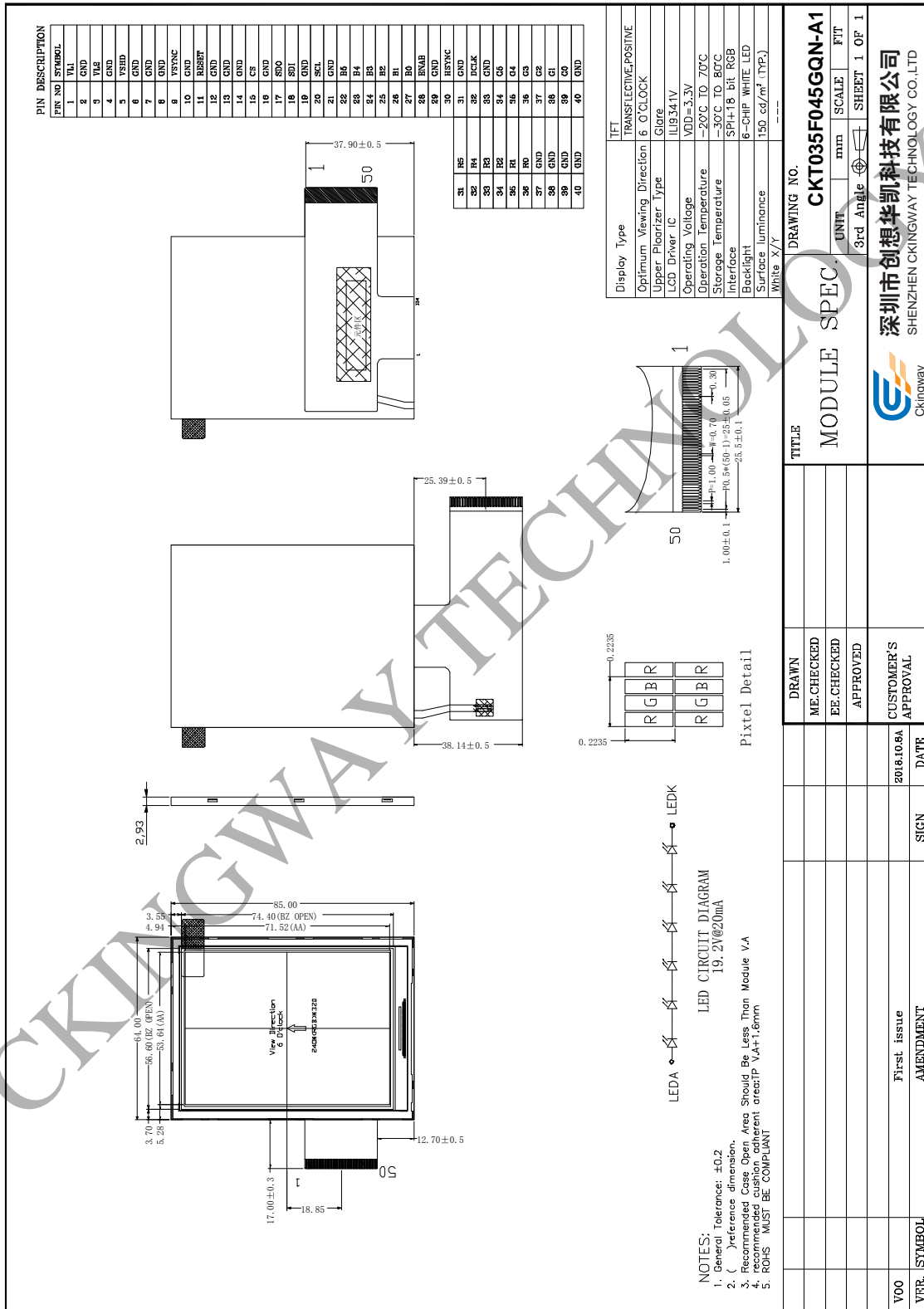
LCD Number: CKT035F045GQN-A1

CUSTOMER APPROVED	PREPARE BY	CHECK BY	APPROVED BY
SUPPLIER APPROVED	PREPARE BY	CHECK BY	APPROVED BY

1. General Specification

Item	Contents	Unit
LCD TYPE	TFT/TRANSFLECTIVE	
MODULE SIZE (W*H*T)	64*85*2.93	MM
ACTIVE SIZE (W*H)	53.64*71.52	MM
PIXEL PITCH (W*H)	0.2235*0.2235	MM
NUMBER OF DOTS	240*320	
DRIVER IC	ILI9341V	
INTERFACE TYPE	SPI+ 18 BIT RGB	
TOP POLARIZER TYPE	GLARE	
RECOMMEND VIEWING DIRECTION	6	O'CLOCK
GRAY SCALE INVERSION DIRECTION	12	O'CLOCK
BACKLIGHT TYPE	6-DIES WHITE LED	
TOUCH PANEL TYPE	WITHOUT	

2. Mechanical Drawing



3. Interface Pin Function

Pin No.	Symbol	Description
1	VL1	Anode of LED(High voltage)
2	GND	Power ground
3	VL2	Cathode of LED(Low voltage)
4	GND	Power ground
5	VSHD	Power supply for digital
6	GND	Power ground
7	GND	Power ground
8	GND	Power ground
9	VSYNC	Vertical sync. in RGB mode
10	GND	Power ground
11	RESET	Reset(Low active)
12	GND	Power ground
13	GND	Power ground
14	GND	Power ground
15	CS	Chip select input(Low enable)
16	GND	Power ground
17	SD0	Serial data output
18	SD1	Serial data input
19	GND	Power ground
20	SCL	Serial interface clock
21	GND	Power ground
22	B5	Blue data bus
23	B4	Blue data bus
24	B3	Blue data bus
25	B2	Blue data bus
26	B1	Blue data bus
27	B0	Blue data bus
28	ENAB	Display enable pin from controller
29	GND	Power ground
30	HSYNC	Horizontal sync. in RGB mode
31	GND	Power ground
32	DCLK	Pixel clock signal in RGB mode
33	GND	Power ground
34	G5	Green data bus
35	G4	Green data bus
36	G3	Green data bus
37	G2	Green data bus
38	G1	Green data bus
39	G0	Green data bus